

# SpeedFace-H5L

Linux-Based Hybrid Biometric  
Access Control and Time & Attendance Terminal  
with Visible Light Facial Recognition



Proactive Facial  
Recognition



New Height of  
Anti-Spoofing



Speedy  
Recognition



Wide Pose Angle  
Acceptance



Touchless for  
Better Hygiene



Compatible with  
**ZKBio Access**

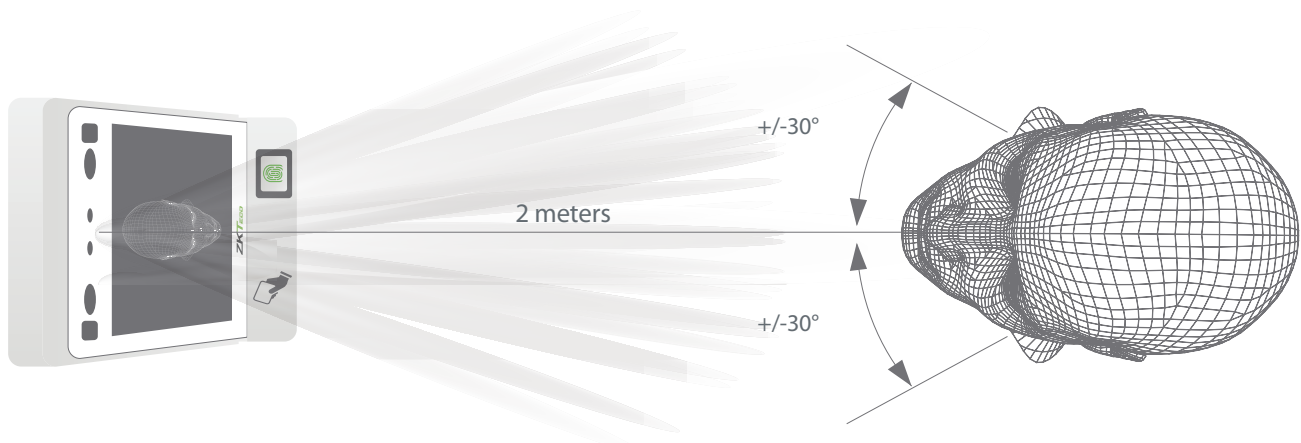
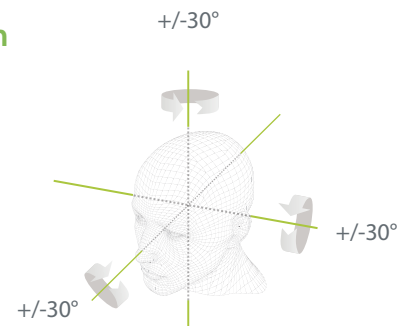


## Features

- Visible Light Facial Recognition
- Anti-spoofing algorithm against print attack (laser, color and B/W photos), videos attack and 3D mask attack
- Multiple verification methods: Face / Fingerprint / Card / Password
- Available card modules: 125kHz ID card (EM) /RFID S50/S70 IC Card (13.56 MHz)
- Supplement lighting with adjustable brightness
- Capacity of 6,000 face templates

### 2 meters of recognition distance and extra wide angle recognition

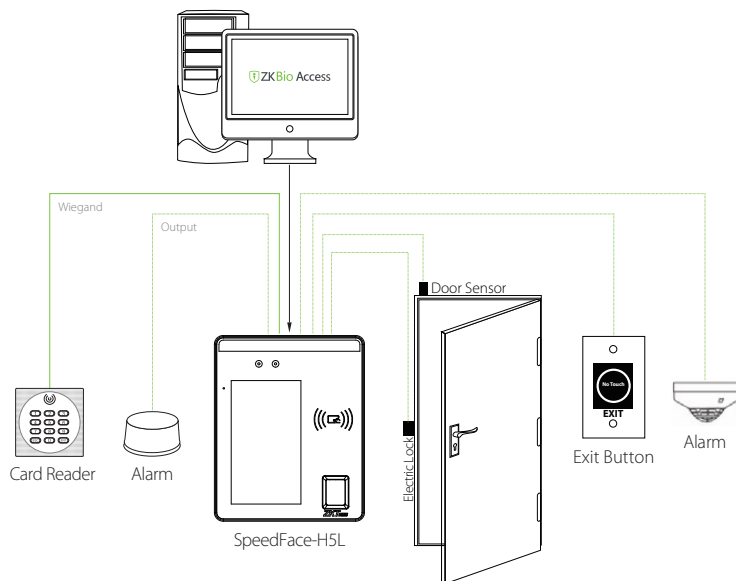
The recognition distance has been greatly extended to 2 meters, which significantly improves maximum traffic rate. While most of the algorithms only support +/-15° of detectable face angle, SpeedFace-H5L doubles the detection angle in terms of head rotation and tilt to +/-30°.



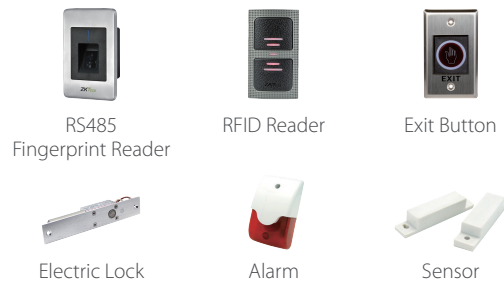
## Specifications

Display	5" touchscreen
Face Capacity	6,000
Fingerprint Capacity	6,000 (Standard); 10,000 (Optional)
Card Capacity	10,000
Transactions	200,000
Operation System	Linux
Standard Functions	ID Card, ADMS, T9 Input, DST, Camera, 9-digit User ID, Access Levels, Groups, Anti-passback, RecordQuery, Tamper Switch Alarm, Multiple Verify Modes
Hardware	900MHz Dual Core CPU; 512MB RAM / 8G Flash; 2MP WDR Low Light Camera; Adjustable LED Supplement Lighting
Communication	TCP/IP, WiFi (Optional), Wiegand input/output, RS485
Access Control Interface	3rd Party Electric Lock, Door Sensor, Exit Button, Alarm output, Auxiliary Input
Optional Function	RFID S50/S70 IC Card (13.56 MHz)
Facial Recongntion Speed	≤1s
Biometrics Algorithms	ZKFace V5.8 & ZKFinger V10.0
Power Supply	12V 3A
Working Humidity	20% - 80%
Working Temperature	0°C - 45°C (32°F - 113°F)
Dimensions (W*H*D)	134.93 * 166.93 * 21.5 (mm)
Supported Softwares	ZKBioAccess

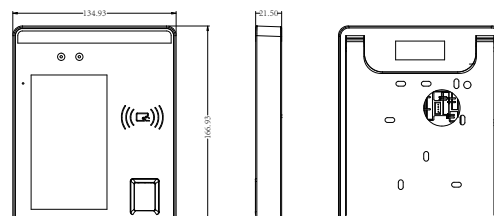
## Configuration



## Optional Accessories



## Dimensions(mm)



V1.0 2020.2.20